

## LIB-V65 Series

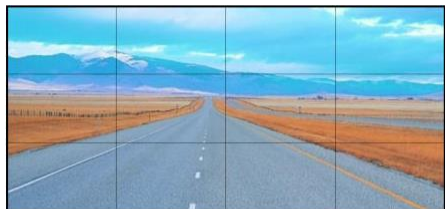
### LCD Video Wall

#### DESCRIPTION

It is able to pre-calibrate the factory default color consistently; it features wide viewing angle extension technology, to guarantee the shown images without transformation and color distortion in the 178° viewing angle; it also features smart control software, realizes real-time control the Video Wall, with humanized operation system, supports multiple systems, and no database support required, simple, friendly usage and easy maintenance.



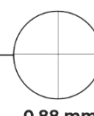
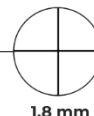
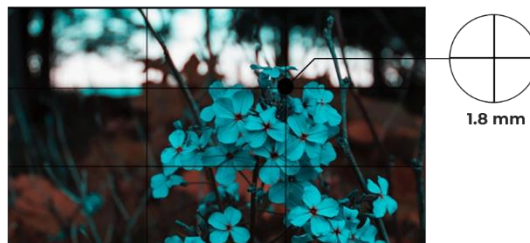
**KEY FEATURES**



**Easy to Remote**



**Image Roaming**



**Ultra Thin Benzel**



**Full Screen**



**Single Screen**

## SPECIFICATION

Model	LIB-V65535F	LIB-V65535U
<b>Panel</b>		
LCD size	65"	
Panel type	TFT-LCD	
Light source	LCD Backlight	
Reslution ( pixels )	1920 x 1080	3840 x 2160
Brightness	500cd / m <sup>2</sup> (typ.)	
Contrast ration	1400:1 (typ.)	
Pixel pitch (mm)	0.372 (H) x 0.372 (V)	
Frame rate	60 Hz	
Viewing angle	178° (H) / 178° (V)	
Life	50,000 hrs (min.)	
Response time	8 ms	
Color saturability	0.72	
Display area (mm)	1428.48 (W) x 803.52 (H)	
Color degree	16.7M	
<b>Solution</b>		
Scalar	MSTAR V53	
<b>Power</b>		
Voltage	100~240V,50~60Hz	
Maximum power	≤ 240 W	
Stand-by power	≤ 0.5 W	
Working temprature	0°C - 40°C	
<b>Environment</b>		
Storage temperature	10% - 90% Non-condensing	
Working humidity	-20°C - 60°C	
Storage humidity	20% - 85% Non-condensing	
Display mode	Standard、 Soft、 User、 Beautiful	
Normal use time	20 hours	
<b>In interface</b>		
RS232-IN	1	
USB	1	
HDMI-IN	2	
DVI-IN	1	

## SPECIFICATION

Model	LIB-V65535F	LIB-V65535U
<b>Out interface</b>		
RS232 OUT		2
<b>Structure</b>		
Net weight (1 in 1)		27.7 kg
Bare dimentions ( mm )		1432.58 x 807.62 x 74.9
Shell material		Metal
Shell color		Black
Bezel (mm)		3.5
VESA wall mount		4-M6 screws 580 x 460 mm
<b>Language</b>		
OSD		English, Chinese
<b>Accessory</b>		
Remote Control		1
Power Cable		1
Manual		1
RS232 Signal cable (network cable)		1
RJ45 to RS232 interface socket		1
Remote control receiver		1
<b>Function</b>		
Using 3-D digital comb filters		
Supports 8bit dual LVDS (1920*1080) HD display		
True colour OSD, user-friendly operation menu		
Mstar ACE-5 automatic colour and image enhancement engine to improve contrast, detail, skin tones, edges, etc.		
Complete factory set-up mode		
With 3-D noise reduction technology		
Comes with splicing software, supports splicing into large screens		
With programmable 12-bit RGB gamma correction technolog		