

LIB-V49 Series

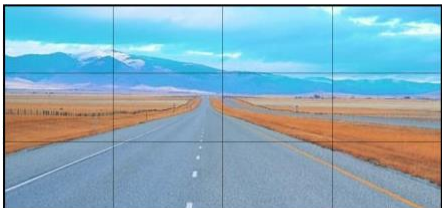
LCD Video Wall

DESCRIPTION

It is able to pre-calibrate the factory default color consistently; it features wide viewing angle extension technology, to guarantee the shown images without transformation and color distortion in the 178° viewing angle; it also features smart control software, realizes real-time control the Video Wall, with humanized operation system, supports multiple systems, and no database support required, simple, friendly usage and easy maintenance.



KEY FEATURES



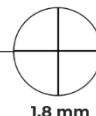
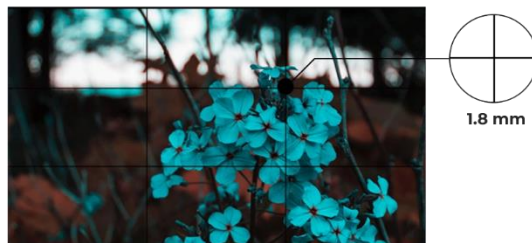
Easy to Remote



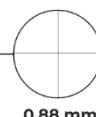
Image Roaming



3.5 mm



1.8 mm



0.88 mm

Ultra Thin Benzel



Full Screen



Single Screen

SPECIFICATION

Model	LIB-V49535F	LIB-V49535U
Panel		
LCD size	49"	
Panel type	TFT-LCD	
Light source	LCD Backlight	
Reslution (pixels)	1920 x 1080	3840 x 2160
Brightness	500cd / m ² (typ.)	
Contrast ration	1400:1 (typ.)	
Pixel pitch (mm)	0.1865 (H) x ×0.55926 (V)	
Frame rate	60 Hz	
Viewing angle	178° (H) / 178° (V)	
Life	50,000 hrs (min.)	
Response time	8 ms	
Color saturability	0.72	
Display area (mm)	1074.54(W) x 604.56(H)	
Color degree	16.7M	
Solution		
Scalar	MSTAR V53	
Power		
Voltage	100~240V,50~60Hz	
Maximum power	≤ 240 W	
Stand-by power	≤ 0.5 W	
Working temprature	0°C - 40°C	
Environment		
Storage temperature	10% - 90% Non-condensing	
Working humidity	-20°C - 60°C	
Storage humidity	20% - 85% Non-condensing	
Display mode	Standard、 Soft、 User、 Beautiful	
Normal use time	20 hours	
In interface		
RS232-IN	1	
USB	1	
HDMI-IN	2	
DVI-IN	1	

SPECIFICATION

Model	LIB-V49535F	LIB-V49535U
Out interface		
RS232 OUT		2
Structure		
Net weight (1 in 1)		19.1 kg
Bare dimentions (mm)		1078.3x 608.4 x 67.3
Shell material		Metal
Shell color		Black
Bezel (mm)		3.5
VESA wall mount		4-M6 screws 580 x 460 mm
Language		
OSD		English, Chinese
Accessory		
Remote Control		1
Power Cable		1
Manual		1
RS232 Signal cable (network cable)		1
RJ45 to RS232 interface socket		1
Remote control receiver		1
Function		
Using 3-D digital comb filters		
Supports 8bit dual LVDS (1920*1080) HD display		
True colour OSD, user-friendly operation menu		
Mstar ACE-5 automatic colour and image enhancement engine to improve contrast, detail, skin tones, edges, etc.		
Complete factory set-up mode		
With 3-D noise reduction technology		
Comes with splicing software, supports splicing into large screens		
With programmable 12-bit RGB gamma correction technolog		