

LIB-V46 Series

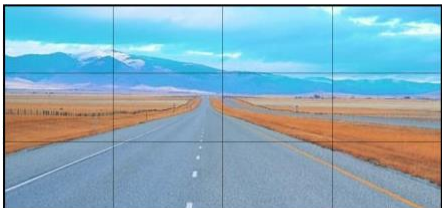
LCD Video Wall

DESCRIPTION

It is able to pre-calibrate the factory default color consistently; it features wide viewing angle extension technology, to guarantee the shown images without transformation and color distortion in the 178° viewing angle; it also features smart control software, realizes real-time control the Video Wall, with humanized operation system, supports multiple systems, and no database support required, simple, friendly usage and easy maintenance.



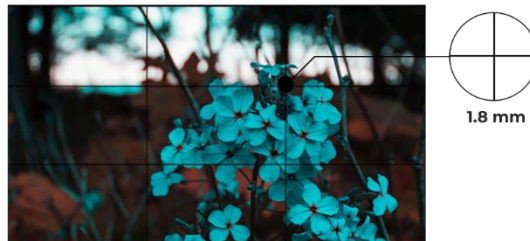
KEY FEATURES



Easy to Remote



Image Roaming



Ultra Thin Benzel



Full Screen



Single Screen



SPECIFICATION

Model	LIB-V46535F	LIB-V46535U	LIB-V46517F	LIB-V46517U	LIB-V46508F	LIB-V46508U
Panel						
LCD size	46"					
Panel type	TFT-LCD					
Light source	LCD Backlight					
Resolution (pixels)	1920 x 1080	3840 x 2160	1920 x 1080	3840 x 2160	1920 x 1080	3840 x 2160
Brightness	500cd / m ² (typ.)					
Contrast ration	1400:1 (typ.)			1200:1 (typ.)		
Pixel pitch (mm)	0.17675 (H) x ×0.53025 (V)		0.17675 (H) x ×0.53025 (V)		0.53025 (H) x ×0.53025 (V)	
Frame rate	60 Hz					
Viewing angle	178° (H) / 178° (V)					
Life	50,000 hrs (min.)					
Response time	8 ms					
Color saturability	0.72					
Display area (mm)	1018.08 (H) x 572.67 (V)					
Color degree	16.7M					
Solution						
Scalar	MSTAR V53					
Power						
Voltage	100~240V,50~60Hz					
Maximum power	≤ 240 W					
Stand-by power	≤ 0.5 W					
Working temprature	0°C - 40°C					
Environment						
Storage temperature	10% - 90% Non-condensing					
Working humidity	-20°C - 60°C					
Storage humidity	20% - 85% Non-condensing					
Display mode	Standard、 soft、 User、 Beautiful					
Normal use time	20 hours					
In interface						
RS232-IN	1					
USB	1					
HDMI-IN	2					
DVI-IN	1					

SPECIFICATION

Model	LIB-V46535F	LIB-V46535U	LIB-V46517F	LIB-V46517U	LIB-V46508F	LIB-V46508U
Out interface						
RS232 OUT				2		
Structure						
Net weight (1 in 1)	17.82 kg			16.87 kg		
Bare dimentions (mm)	1022x 576.6 x 71.2			1019 x 573.6 x 67.2		
Shell material				Metal		
Shell color				Black		
Bezel (mm)	3.5		1.7		0.88	
VESA wall mount	4-M6 screws 570 x 480mm					
Language						
OSD	English, Chinese					
Accessory						
Remote Control				1		
Power Cable				1		
Manual				1		
RS232 Signal cable (network cable)				1		
RJ45 to RS232 interface socket				1		
Remote control receiver				1		
Function						
Using 3-D digital comb filters						
Supports 8bit dual LVDS (1920*1080) HD display						
True colour OSD, user-friendly operation menu						
Mstar ACE-5 automatic colour and image enhancement engine to improve contrast, detail, skin tones, edges, etc.						
Complete factory set-up mode						
With 3-D noise reduction technology						
Comes with splicing software, supports splicing into large screens						
With programmable 12-bit RGB gamma correction technolog						